

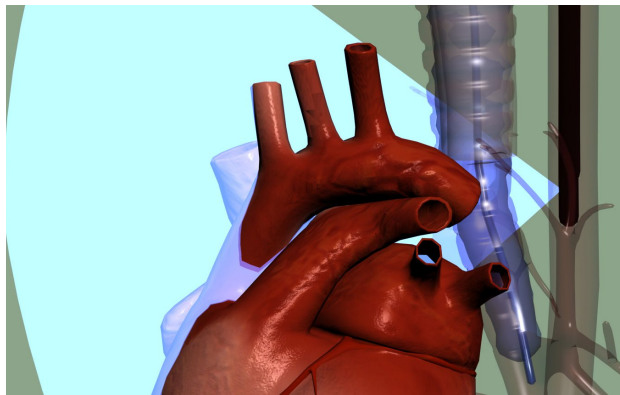
# A-View®

ENDOTRACHEAL BALLOON CATHETER

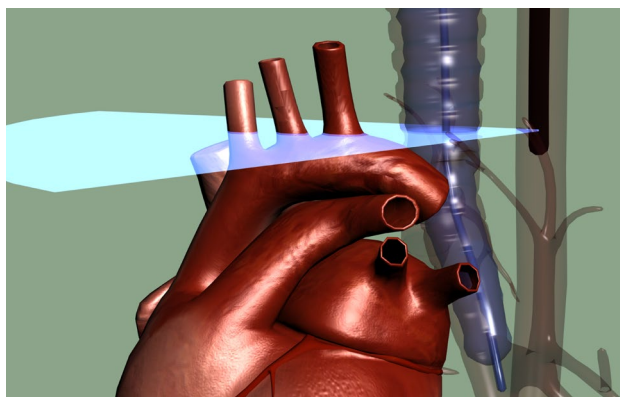
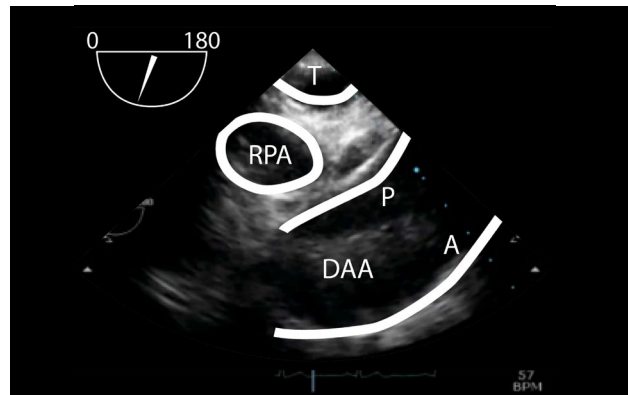
## Resolving the 'blind spot' of Transesophageal Echocardiogram (TEE)

A-View® endotracheal balloon catheter is inserted into the trachea of fully anaesthetized patients. The balloon catheter is filled with saline to enable echo conduction through the trachea, thus resolving the blind spot of TEE.

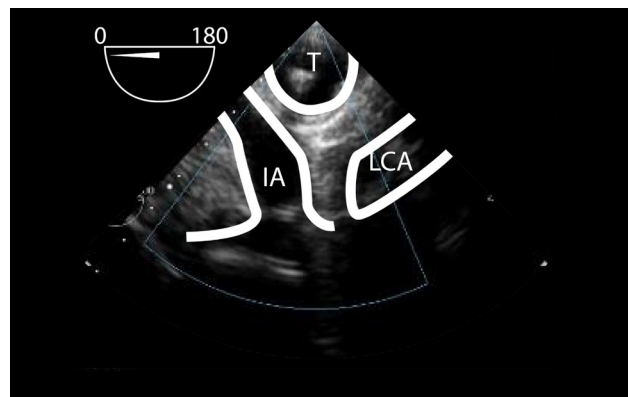
The following views can be obtained with A-View® enhanced TEE.



Upper Esophagus Distal Ascending Aorta, Long-Axis

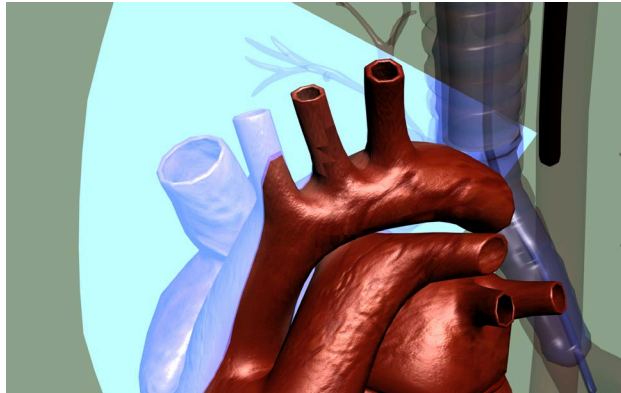


Upper Esophagus Aortic Arch Branch Vessels, Short-Axis

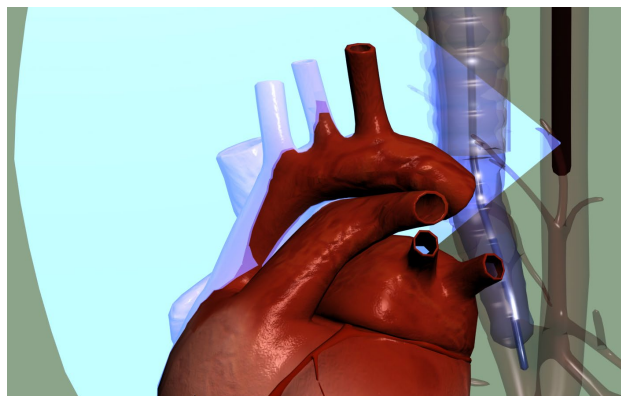
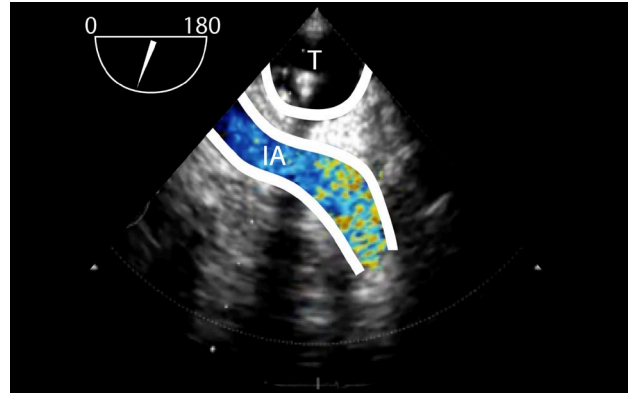


# A-View®

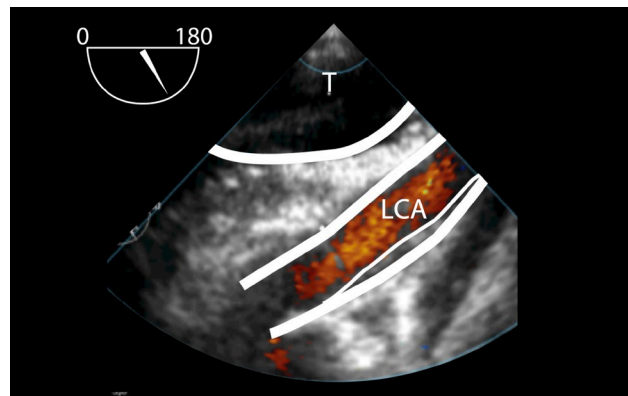
Enhanced TEE with endotracheal balloon catheter



Upper Esophagus Innominate Artery, Long-Axis



Upper Esophagus Left Carotid, Long-Axis



- DAA Distal Ascending Aorta
- A Anterior wall
- P Posterior wall
- IA Innominate Artery
- LCA Left Carotid Artery
- RPA Right Pulmonary Artery
- T Trachea

A-View is a registered trademark of Stroke2Prevent BV.  
The DeRoyal logo and Improving Care. Improving Business.  
are registered trademarks of DeRoyal Industries, Inc.